

PRODUCT DATA SHEET

CATALOG NO.: BML-SA682

LOT NO.: temp

PRODUCT: Anti-Butyryl-Lysine

IMMUNOGEN: Butyrylated KLH

SPECIFICITY: Recognizes proteins containing butyrylated lysine. In western blotting, minor cross-reactivity with propionyl-lysine can be minimized by adjustments to protein load and/or the antibody dilution (see Figure).

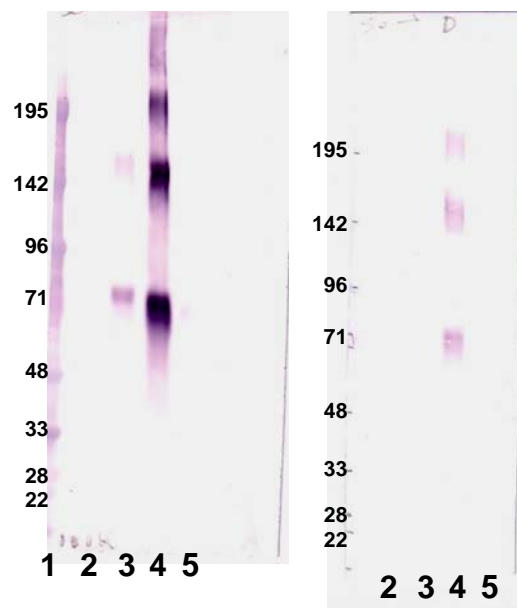
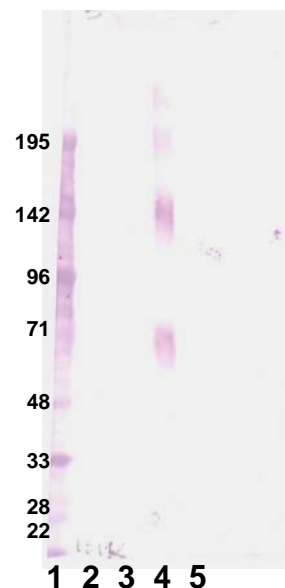
APPLICATIONS: Western Blotting: 1:1000-10,000. All antibody dilutions should be determined for each application. Other applications have not been tested.

FORM / PURIFICATION: This rabbit polyclonal antibody is supplied as serum diluted in phosphate buffered saline (PBS). The serum was immunodepleted to decrease reactivities with KLH, acetyl-lysine and propionyl-lysine.

STORAGE: -70°C, Avoid repeated freeze/defrost cycles. For long term storage, aliquot product into individual tubes and freeze at -70°C.

REFERENCES:

1. Y. Chen *et al. Mol Cell Proteomics* 2007 **6** 812
2. Z. Cheng *et al. Mol Cell Proteomics* 2009 **8** 45
3. K. Zhang *et al. J Proteome Res* 2009 **8** 900



For each blot, the gel lane loadings were: **1)** colored MW markers; **2)** acetylated BSA; **3)** propionylated BSA; **4)** butyrylated BSA; **5)** untreated BSA. In the gel for the upper blot loads in lanes **2-5** were 5 ng BSA, for lower two blots, 50 ng BSA. Dilution of the anti-butyryl-lysine antibody was 1:1000 for the upper and lower left blots and 1:10,000 for the lower right blot. Blots were incubated with the primary antibody overnight at 4°C, with the secondary (goat anti-rabbit-alkaline phosphatase) for 1.5 hr., room temperature and developed with BCIP/NBT.

FOR RESEARCH USE ONLY. NOT FOR DIAGNOSTIC OR THERAPEUTIC USE



www.enzolifesciences.com