

# PRODUCT DATA SHEET



PRODUCT: SCH-202676

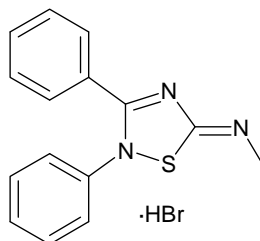
CAS NO.: 70375-43-8

N-(2,3-Diphenyl-1,2,4-thiadiazole-5-(2H)-ylidene) methanamine hydrobromide

CATALOG NO.: G-521

LOT NO.:

STRUCTURE:



PHYSICAL APPEARANCE: Yellow solid

MOLECULAR FORMULA: C<sub>15</sub>H<sub>13</sub>N<sub>3</sub>S·HBr

MOLECULAR WEIGHT: 348.3

PURITY: 99% (HPLC)

SOLUBILITY: Soluble in: DMSO (7 mg/mL with warming)

STORAGE: Store, as supplied, at room temperature for up to 1 year. Store solutions at -20°C for up to 3 months.

APPLICATION NOTES: SCH-202676 is a modulator of both agonist and antagonist binding to G protein-coupled receptors<sup>1</sup> which functions via thiol modification rather than true allosteric mechanisms<sup>2</sup>. Has been shown to block agonist or antagonist activity at adenosine<sup>4,5</sup>, adrenergic<sup>1</sup>, dopaminergic<sup>1</sup>, muscarinic<sup>3</sup>, opioid<sup>1</sup> and P2Y<sup>4</sup>. IC<sub>50</sub>s vary from 0.1 to 1.8 μM) The nature of the interaction of SCH-202676 and receptors is dependent on whether it is studied using intact versus broken cell preparations<sup>3</sup>.

REFERENCES: 1. A.B. Fawzi *et al. Mol. Pharmacol.* 2001 **59** 30  
2. A.M. Lewandowicz *et al. Brit. J. Pharmacol.* 2006 **147** 422  
3. A. Lanzafame and A. Christopoulos *J. Pharmacol. Exp. Ther.* 2004 **308** 830  
4. Z.G. Gao *et al. Life Sci.* 2004 **74** 3173  
5. E.C. Klaasse *et al. Eur. J. Pharmacol.* 2005 **522** 1

**The pharmacological and toxicological properties of this product have not been fully investigated. Exercise caution in use and handling. This product must not be used in humans.**